

Maintainer



MOBILE LUBRICATION EQUIPMENT

Maintainer

Standard Features

- **Galvanized Body Including:**

- Body Shell (12 & 14 gauge)
- Doors (11 gauge)
- Bulkhead
- Wheel Skirting
- Exterior Sheeting

- **Single Piece Door Construction for Better Fit and No Water Traps**

- **Three Point Door Latches and Stainless Steel Hinges**

- **I.C.C. Lights, Reflectors, and Mud Flaps with Tail Light Guards and Rear Body Grab Handles**

- **Ribbed Underbody for Added Strength**

- **Standard Tank Equipment Including:**

- Lockable Vented Fill Caps
- Low Level Shut-offs with Electric Operated Floats
- Filler Necks with Screens
- Fully Guarded Product Level Sight Gauges
- Suction Line Shut-off Valves

- **Spring Cushioned Tank Mounting for Superior Tank Life**

Popular Options

- **Bed Options:**

- Medium or Heavy Duty Deck Structure
- Full Range of Body Lengths
- Open Center Deck with Enclosed Rear Reel Compartment
- Open Center Deck with Open Reel Storage
- Fully Enclosed Insulated Van Bodies (Electric or Hot Water Heated)

- **Aluminum Rear Roll-up or Galvanized Swing-out Door(s)**

- **Underbody and Above Deck Storage Compartments**

- **Built-in or Fold-up Steps**

- **Interior and Exterior Lighting**

- **Fuel, Oil, Grease & Evac Systems:**

- Emergency Shutoffs
- Booster Guns
- Suction Strainers
- Quick Fill Systems
- Meters, Totalizers
- Pre-set Metering Nozzles
- Hose Reel Sizes (Air, Hydraulic, Spring, or Electric Rewind)
- Air or Hydraulic Product Distribution Systems

- **Combination Service/Lube Units**

Customized to Meet Any Customer Requirement



One-ton Mini-Lube
body with open
reel access

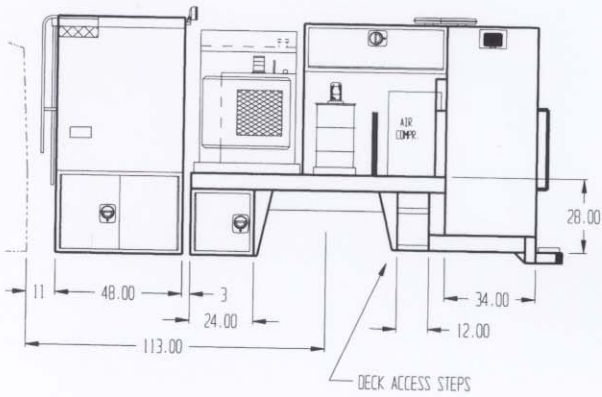
Two-ton Service/Lube
combination body
with side reel compartment



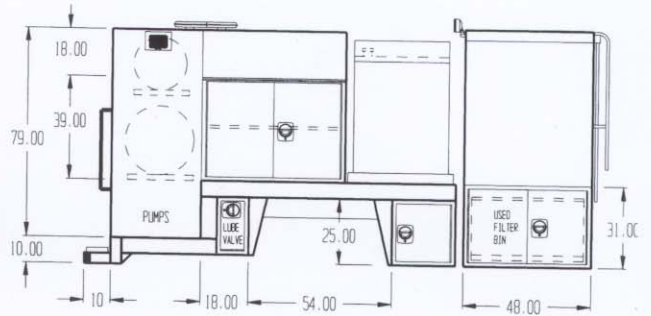
Two-ton Lube/Fuel
body with enclosed reel
compartment

Two Ton Lubrication Truck

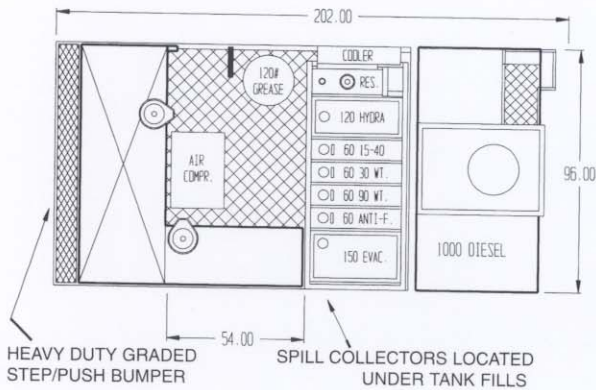
Streetside View



Curbside View



Back View



Wide Variety of Lube Body Styles



2-Ton Lube Fully Enclosed



2-Ton Enclosed Reel Lube with Oval Tank & E-Z Pick Electric Crane



2-Ton Lube with Enclosed Reels



1-Ton Lube with Enclosed Reels

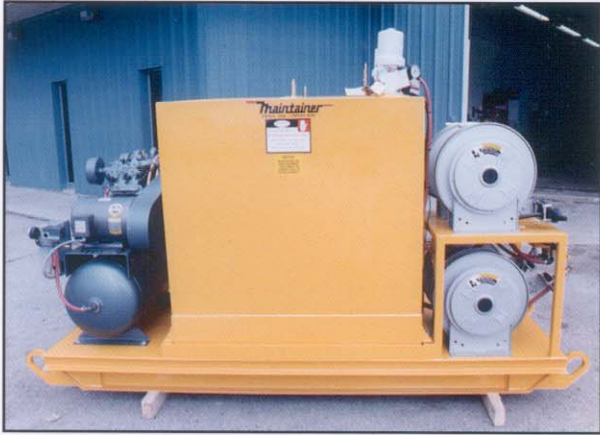


2-Ton Lube with Open Reels



Service/Lube Combo Body

Lube Skids, Cranes and Accessories



Portable Lube Skids



Pull Behind Lube Trailers



Air Pump Distribution System



Hydraulic Pump Distribution System



Hydraulic Driven Generators



Hydraulic Driven Air Compressors

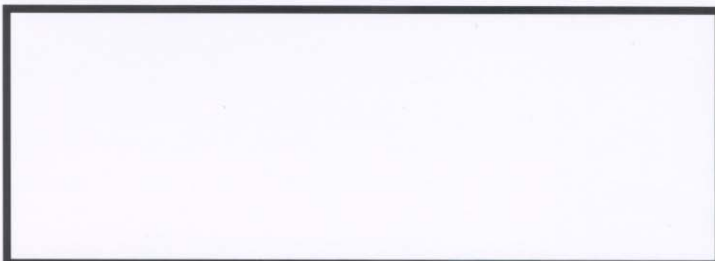
PRODUCT TANKS		
PRODUCTS CARRIED	RECOMMENDED TANK	CAPACITY AVAILABLE
OIL	STEEL	0 - 1,000
EVAC-(WASTE OIL)	STEEL	0 - 1,000
DIESEL FUEL	STEEL (SQUARE)	0 - 1,000
DIESEL FUEL	STEEL (OVAL)	0 - 5,000
GASOLINE (Requires DOT)	STEEL (OVAL)	120 - 5,000
BULK GREASE	STEEL	0 - 400
ANTI-FREEZE (PREMIX)	STAINLESS STEEL	0 - 800
WATER	STAINLESS STEEL	0 - 800

CHASSIS SELECTION CHART (FOR GUIDELINE PURPOSES ONLY)		
CHASSIS	MAX. GAL.	BODY
CLASS 4 84" C.A.	395	10'
CLASS 5 102" C.A.	675	12'
CLASS 6 108" C.A.	1035	14'
CLASS 7 120" C.A.	1285	16'
CLASS 8 126" C.T.	2190	18'
CLASS 8 156" C.T.	2745	18'+



Wide variety of cranes from 2,000 - 14,000 lb. capacity.

DISTRIBUTED BY:



Maintainer

P.O. BOX 349 - 1701 SOUTH 2ND AVE.
SHELDON, IOWA 51201

1-800-831-8588

1-712-324-5001

FAX: 1-712-324-3526

www.maintainer.com