

MECHANICS SERVICE BODIES

BY:

Maintainer



The Leader

in Quality Performance

Features

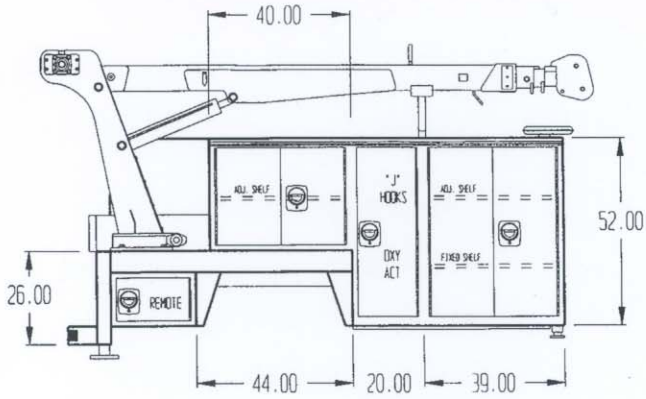
STANDARD FEATURES:

- GALVANNEALED BODY TO RESIST CORROSION INCLUDING:
 - BODY SHELL (14 GA.)
 - DOORS (11 GA.)
 - BULKHEAD
 - WHEEL SKIRTING
 - ALL EXTERIOR SHEETING
- DOORS ARE SINGLE PIECE CONSTRUCTION TO AVOID WATER TRAPS
- THREE POINT KEYED ALIKE CHROME D-RING LATCHES
- SPRING LOADED DOOR HOLDERS
- UNDERBODY IS UNDERCOATED TO RESIST CORROSION
- 48" WIDE CENTER DECK WITH 1/8" THICK DECK PLATING
- REAR DECK LID TO HOUSE VALVE AND OUTRIGGER CONTROLS ACCESSIBLE OUT REAR
- CLOSED CENTER LOAD SENSING HYDRAULIC POWER PACKAGE INCLUDING ELECTRIC PILOT SOLENOID CONTROLS FOR CRANE FUNCTIONS WITH METERED ADJUSTABLE SPOOL SPEED AND FLOW CONTROLS
- TWO MANUAL CRANK REAR OUTRIGGERS WITH PADS (1 TON)
- TWO HYDRAULIC REAR OUTRIGGERS WITH PADS (2 TON)
- ONE CURBSIDE FRONT OUTRIGGER ON 5,000 & 6,000 LB. CRANE UNITS (1 TON)
- REAR DECK PLATE STEP BUMPER
- I.C.C. LIGHTS, REFLECTORS AND MUD FLAPS WITH TAIL LIGHT GUARDS AND REAR BODY GRAB HANDLES
- UNDERBODY WITH DRAINS, IS RIBBED FOR REINFORCEMENT
- ALL CRANES INCLUDE:
 - HYDRA LIFT-WINCH-ROTATE
 - CLOSED CENTER LOAD SENSING VALVE
 - ANTI-TWO BLOCK DEVICE
 - 25' REMOTE CONTROL
 - HYDRAULIC OVERSTRESS

OPTIONAL FEATURES:

- PRESSURIZED STORAGE COMPARTMENTS
- MANUAL JIB CRANE EXTENSION
- PROPORTIONAL CONTROL ON CRANE
- HYDRAULIC DRIVEN AIR COMPRESSORS AND ACCESSORIES
- HYDRAULIC DRIVEN GENERATOR AND ACCESSORIES
- GAS AND DIESEL DRIVEN WELDERS
- SLIDE-IN OR SWING-DOWN TAIL GATE
- COOLING AND HEATING PACKAGES FOR HYDRAULIC SYSTEMS
- FIXED OR ADJUSTABLE SHELVING
- ROLL-OUT DRAWERS AND TRAYS
- PARTS BOOK DIVIDER
- COMPARTMENTS COVERED WITH DECK PLATE
- OXY/ACT STORAGE COMPARTMENT
- CENTER DECK SLIDE TOP COVERS
- BACKUP ALARM
- HYDRAULIC QUICK DISCONNECT/FLOW METER
- VISE AND GRINDER BRACKETS
- 12/24 VOLT JUMP START WITH CABLES
- EXTERIOR LIGHT PACKAGE
- INTERIOR COMPARTMENT LIGHTS
- FLUSH MOUNT TIE DOWNS
- MINI LUBE PACKAGES
- TWO TONE PAINT
- HEAVY DUTY PUSH WORKBENCH BUMPER
- SPARE TIRE BRACKET
- OUR ENGINEERING DEPARTMENT WILL DESIGN A BODY TO FIT YOUR APPLICATIONS AND SPECIFICATIONS

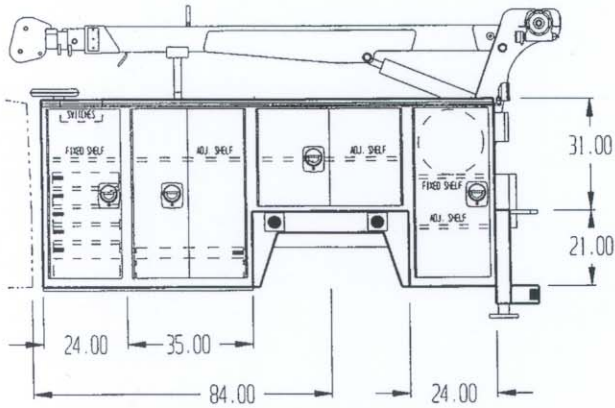
ONE-TON SERVICE BODIES



**One Ton – Curbside View
Layout & Dimensions**



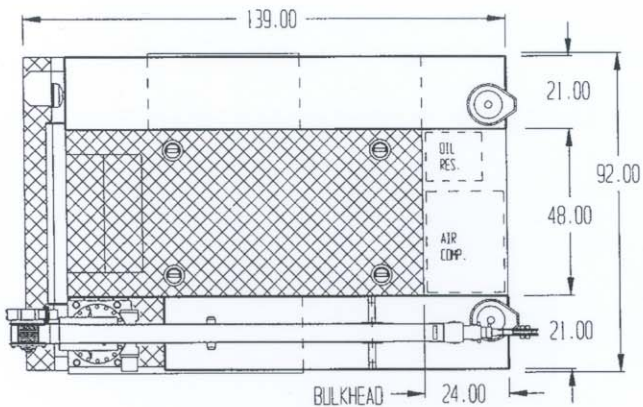
One Ton – Curbside View



**One Ton – Streetside View
Layout & Dimensions**



One Ton – Streetside View



**One Ton – Top View
Layout & Dimensions**

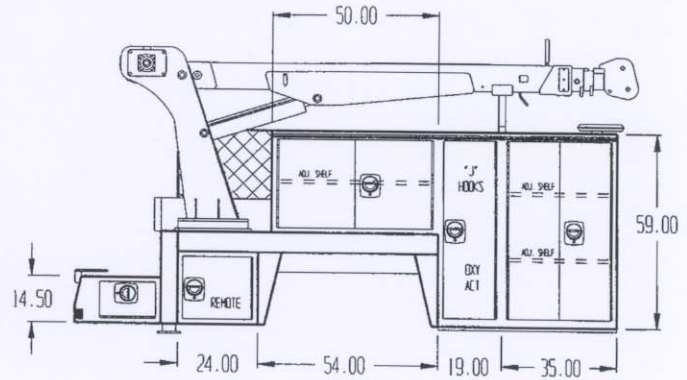


One Ton – Rear View

TWO-TON SERVICE BODIES



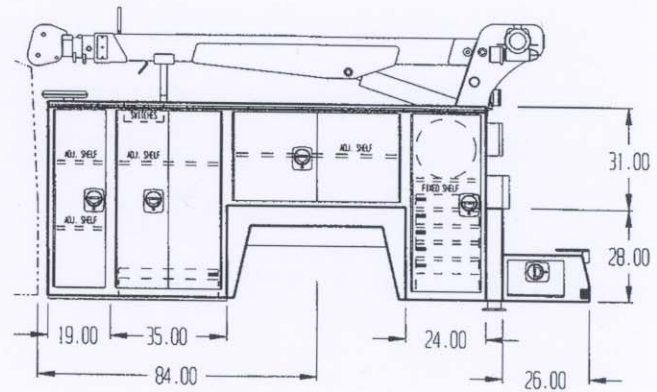
Two Ton – Curbside View



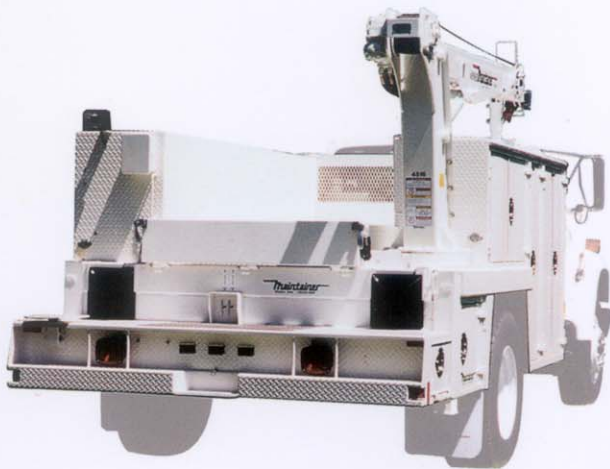
*Two Ton – Curbside View
Layout & Dimensions*



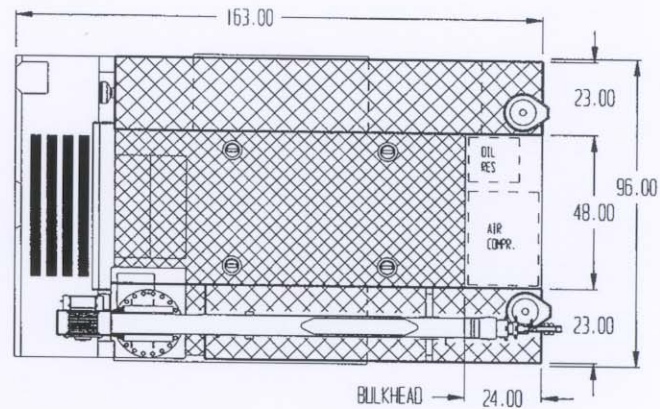
Two Ton – Streetside View



*Two Ton – Streetside View
Layout & Dimensions*



Two Ton – Rear View



*Two Ton – Top View
Layout & Dimensions*

Maintainer



MTG-3-1-084LP

(Maintainer Galvannealed Body - 3,500 lb. crane
- one ton chassis-84" CA; low profile body)



MTG-3-2-102

(Maintainer Galvannealed Body - 3,500 lb. crane
- two ton chassis-102" CA)



MTG-6-1-084

(Maintainer Galvannealed Body - 6,000 lb. crane
- one ton chassis-84" CA)



MTG-8-2-084

(Maintainer Galvannealed Body - 8,000 lb. crane
- two ton chassis-84" CA)



MTG-6-1-084LP

(Maintainer Galvannealed Body - 6,000 lb. crane
- one ton chassis-84" CA; low profile body)



MTG-14-2-120

(Maintainer Galvannealed Body - 14,000 lb. crane
- two ton chassis-120" CA)

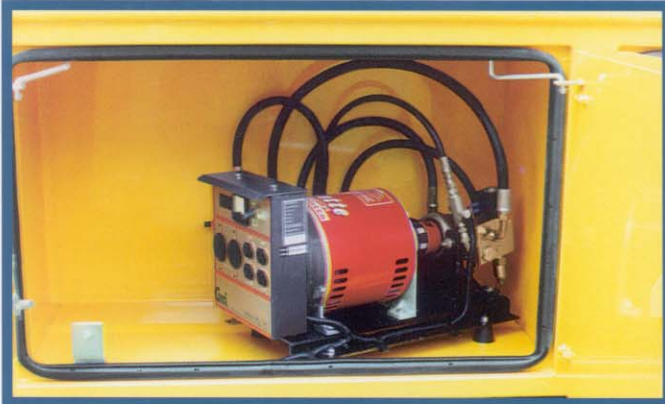
ACCESSORIES



CUSTOM DESIGNED WELDER COMPARTMENT



30 CFM HYDRAULIC DRIVEN AIR COMPRESSOR



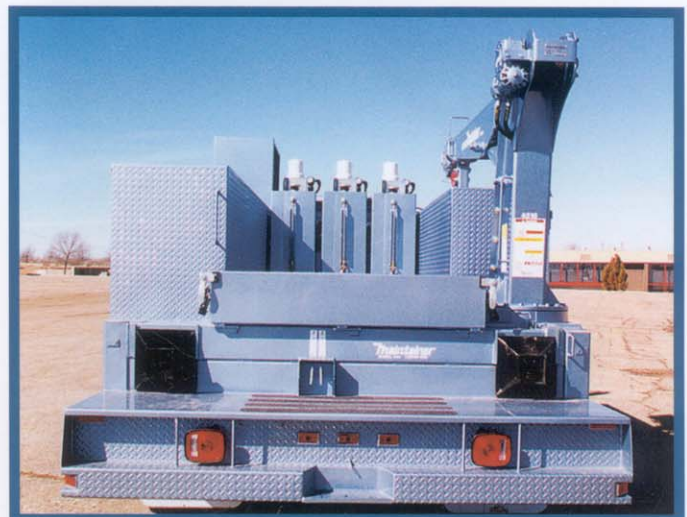
HYDRAULIC DRIVEN GENERATOR



DRAWERS AND PARTS BINS

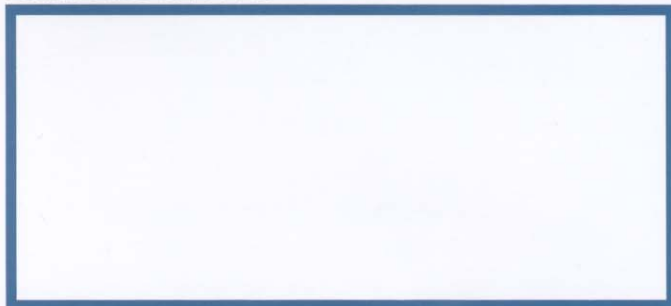


CENTER DECK SLIDE TOP COVER



COMBINATION LUBE PACKAGES AVAILABLE

DISTRIBUTED BY:



Traintainer

P.O. BOX 349 - 1701 SOUTH 2ND AVE.
SHELDON, IOWA 51201

1-800-831-8588
1-712-324-5001
FAX: 1-712-324-3526

