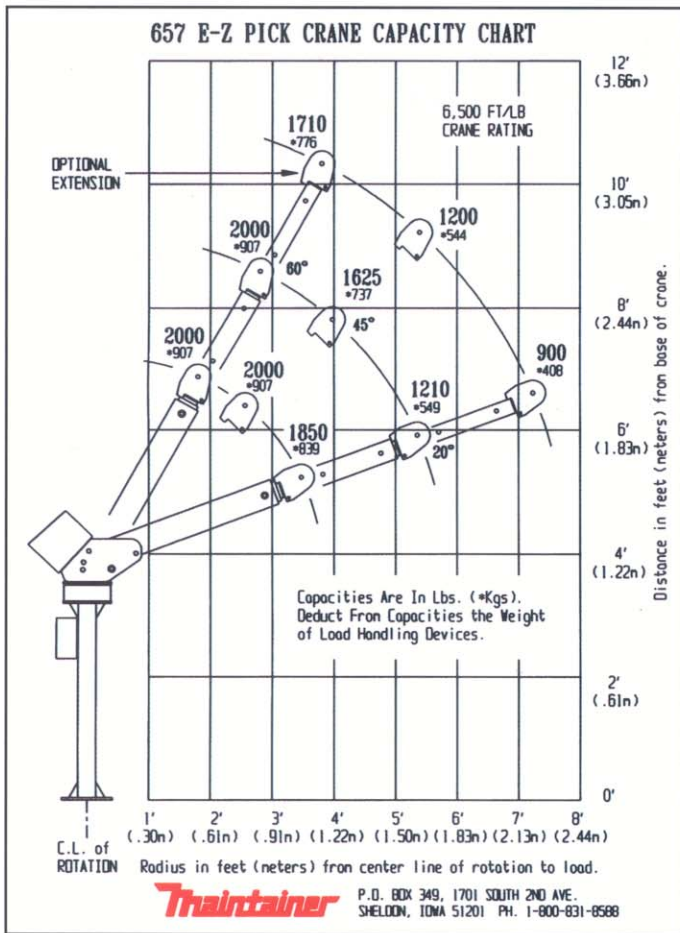


# E-Z PICK Crane Model 657

- **Compact:** Stows neatly and compactly. Folded dimension of only 56" high by 12.5" wide. Lightweight design weighs only 268 lbs.
- **Electric Operation:** Electric winch and rotate. Rotates a full 430 degrees. Operates on standard 12-volt vehicle electrical system.
- **Maximum Lift Capacity:** 2000 lbs.
- **Manually Extendible Boom:**  
From 2'0" to 7'4"



**By Maintainer Corporation  
of Iowa, Inc.  
1-800-831-8588  
www.maintainer.com**



- ⇒ Crane rating of 6,500 ft./lbs.
- ⇒ Maximum lift capacity of 2,000 lbs. (907 kgs.)
- ⇒ Three manual boom extensions from 2' (.6m) to 7'4" (2.3m)
- ⇒ 12-volt electric swing with 430 degree rotation and self-locking stop through a sealed ball bearing slewing ring.
- ⇒ Electric 12-volt winch with dynamic motor brake and mechanical friction brake, 50' of 3/16" galvanized aircraft cable, maximum 70 amp drain under full load, 10' remote control, swivel block with hook and latch.
- ⇒ Lightweight design-268 lbs.
- ⇒ Easy mount 8" square hole pattern with 10" square mounting space requirement.
- ⇒ Optional mounting plate and manual outrigger.

**Maintainer**

P.O. Box 349 • 1701 South Second Avenue • Sheldon, Iowa 51201